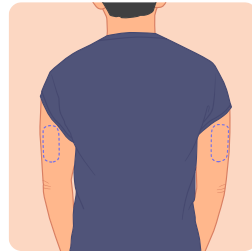




QUICK GUIDE

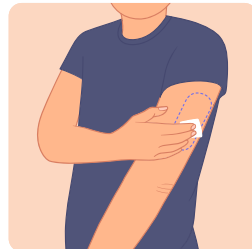
Effortless Application



Step 1

Choose the back of your upper arms as the application site.

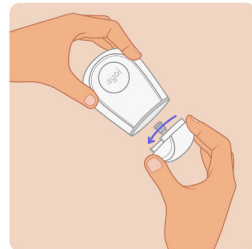
Caution: Avoid area with scars, moles, stretch marks, lumps. The area should generally stay flat at most of the times, consider shaving to ensure a snug fit.



Step 2

Clean application site.

Caution: The application site MUST be sufficiently clean and dry to make the Monitor adhere securely to the skin.



Step 3

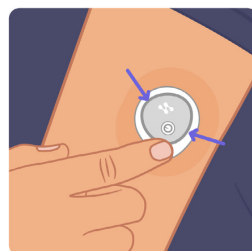
Rotate open the bottom cover of the Applicator.

Caution: Do NOT use if damaged or the expiry date has passed.



Step 4

Place the Applicator over the application site, press the launch button, and gently pull away the Applicator. The Monitor should now be attached to the skin.



Step 5

Gently press the tape around the edge of the Monitor to attach it firmly to the skin. Once done, follow the instructions in the APP to start using the Monitor.